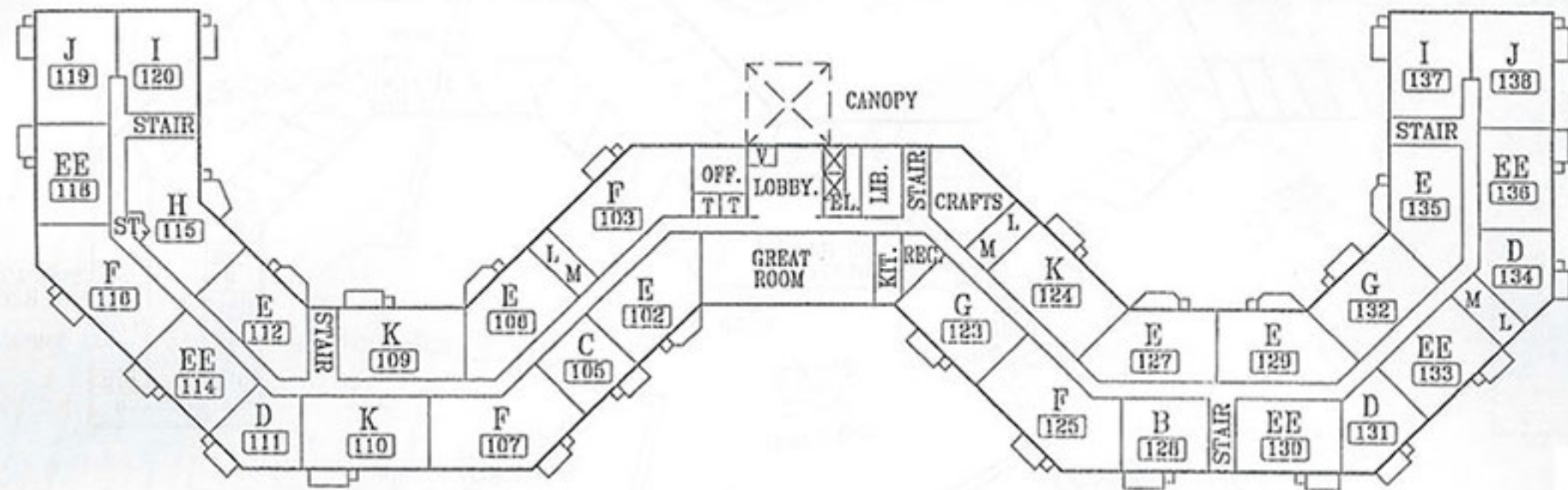


REALIFE Cooperative  
of Bloomington

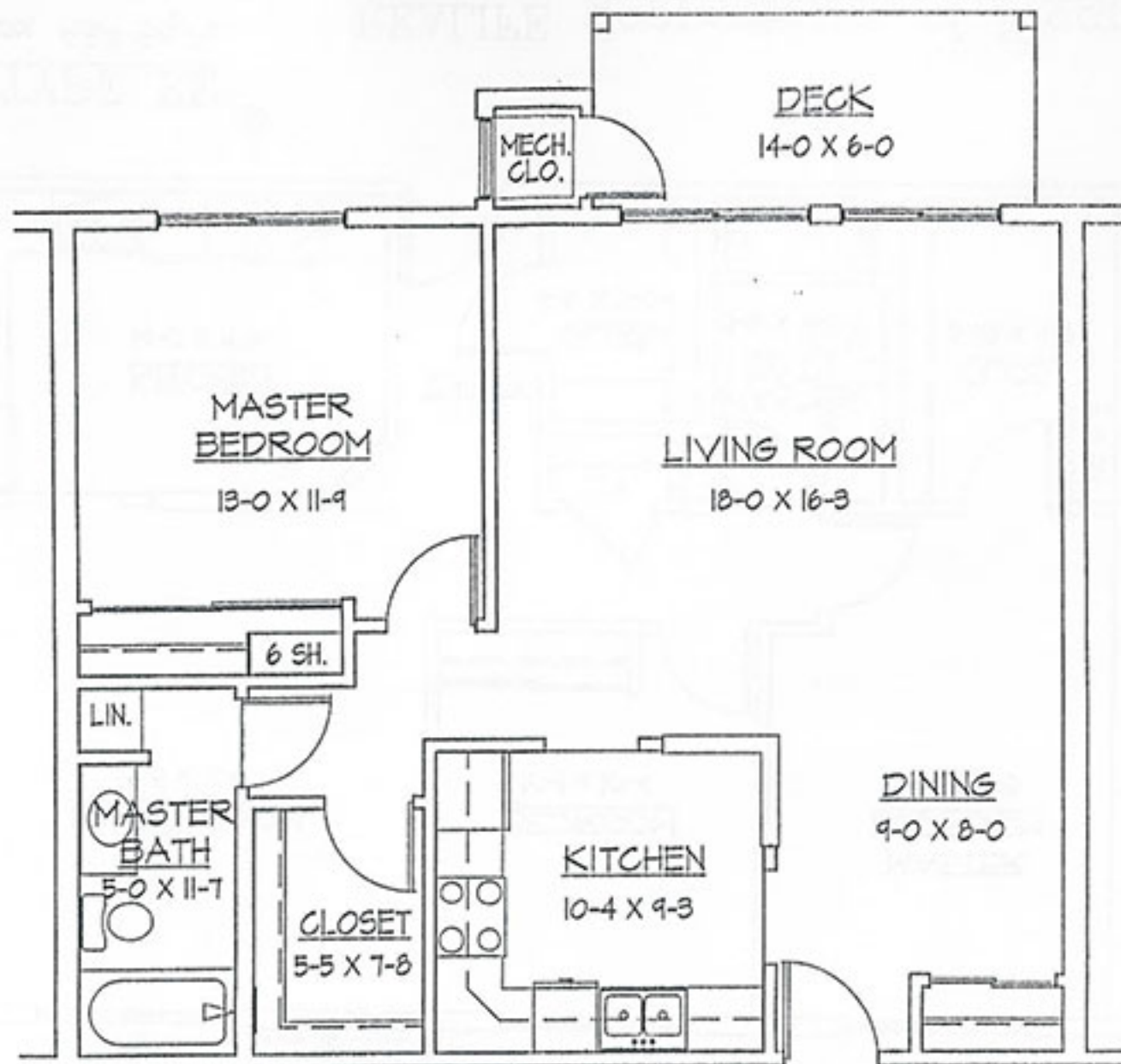


FIRST FLOOR PLAN



NORTH





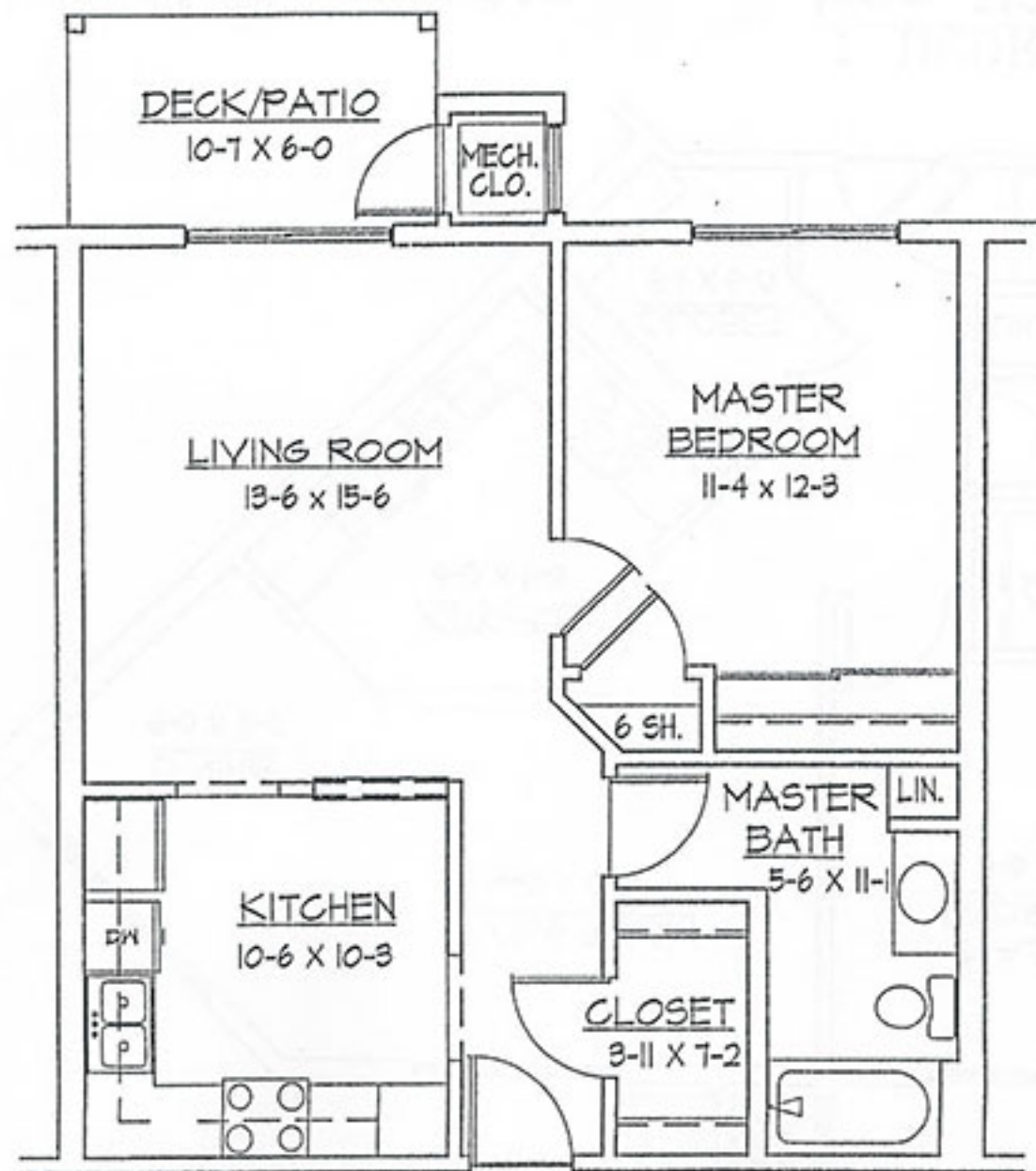
Johnson, Johnson & Associates  
 ARCHITECTS, INC.  
 1000 Parker Drive, Suite 200  
 Bloomington, MA 01103  
 P.O. 612-925-4377 Fax: 612-925-0678



1 BEDROOM UNIT TYPE B ©

1/4" = 1'-0"      Approx 827 Sq.Ft.  
 ACTUAL DIMENSIONS MAY VARY      10-17-97

REALIFE Cooperative of Bloomington



Johnson, Gillies & Associates  
 Architects, Inc.  
 10215 W. 11th Street, Suite 100  
 Overland Park, KS 66213  
 Ph: 616-921-6337 Fax: 616-921-6678



1 BEDROOM UNIT TYPE C ©

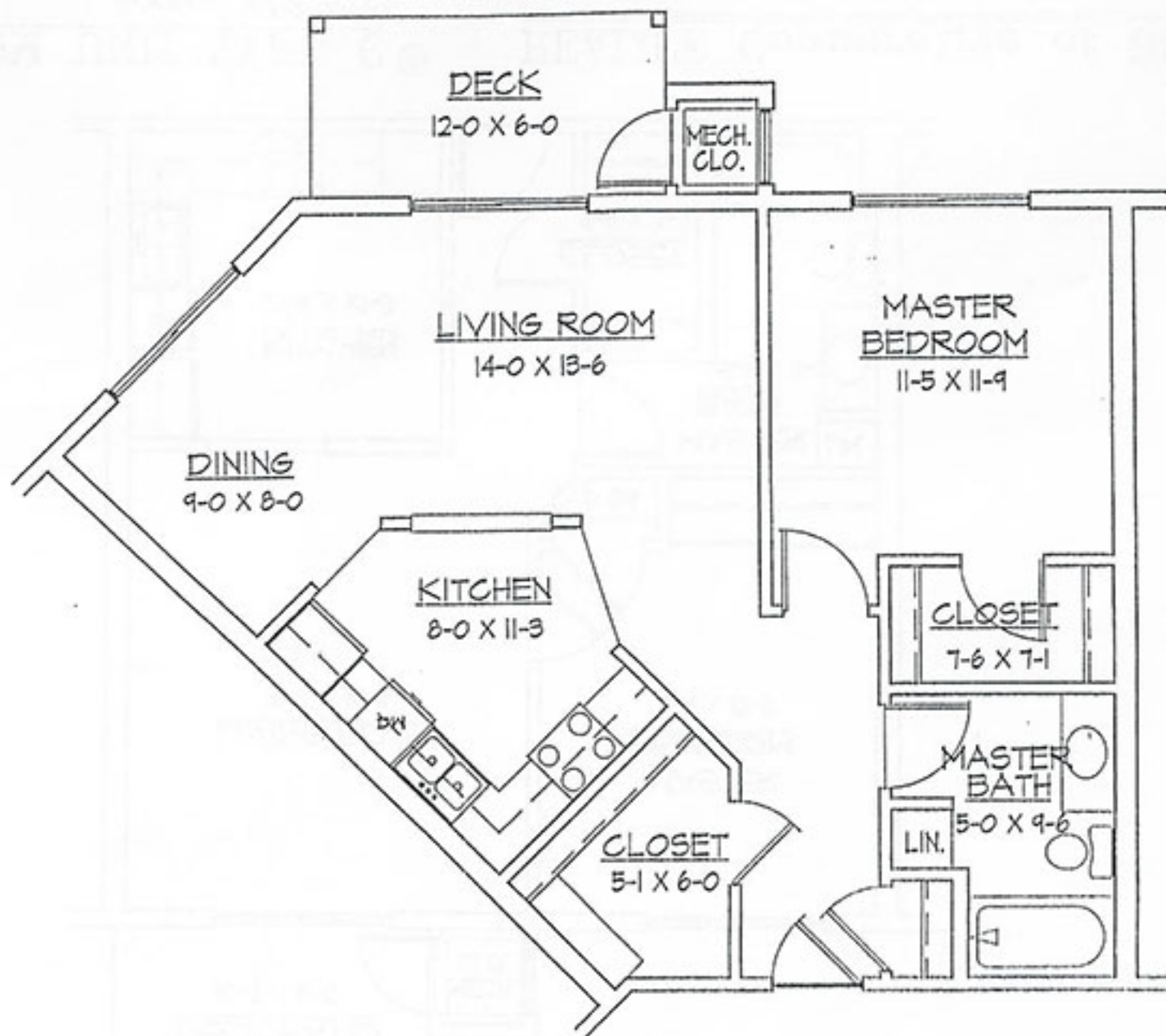
REALIFE Cooperative of Bloomington

1/4" = 1'-0"

Approx 669 Sq.Ft.

ACTUAL DIMENSIONS MAY VARY

10-17-97



Johnson, Shellen & Associates  
 ARCHITECTS, INC.  
 1219 Polaris Drive  
 Columbus, IN 47221  
 Ph. 812-335-0337 Fax. 812-335-0378



# 222 # 131  
 # 231

1 BEDROOM UNIT TYPE D ©

Approx 740 Sq.Ft.

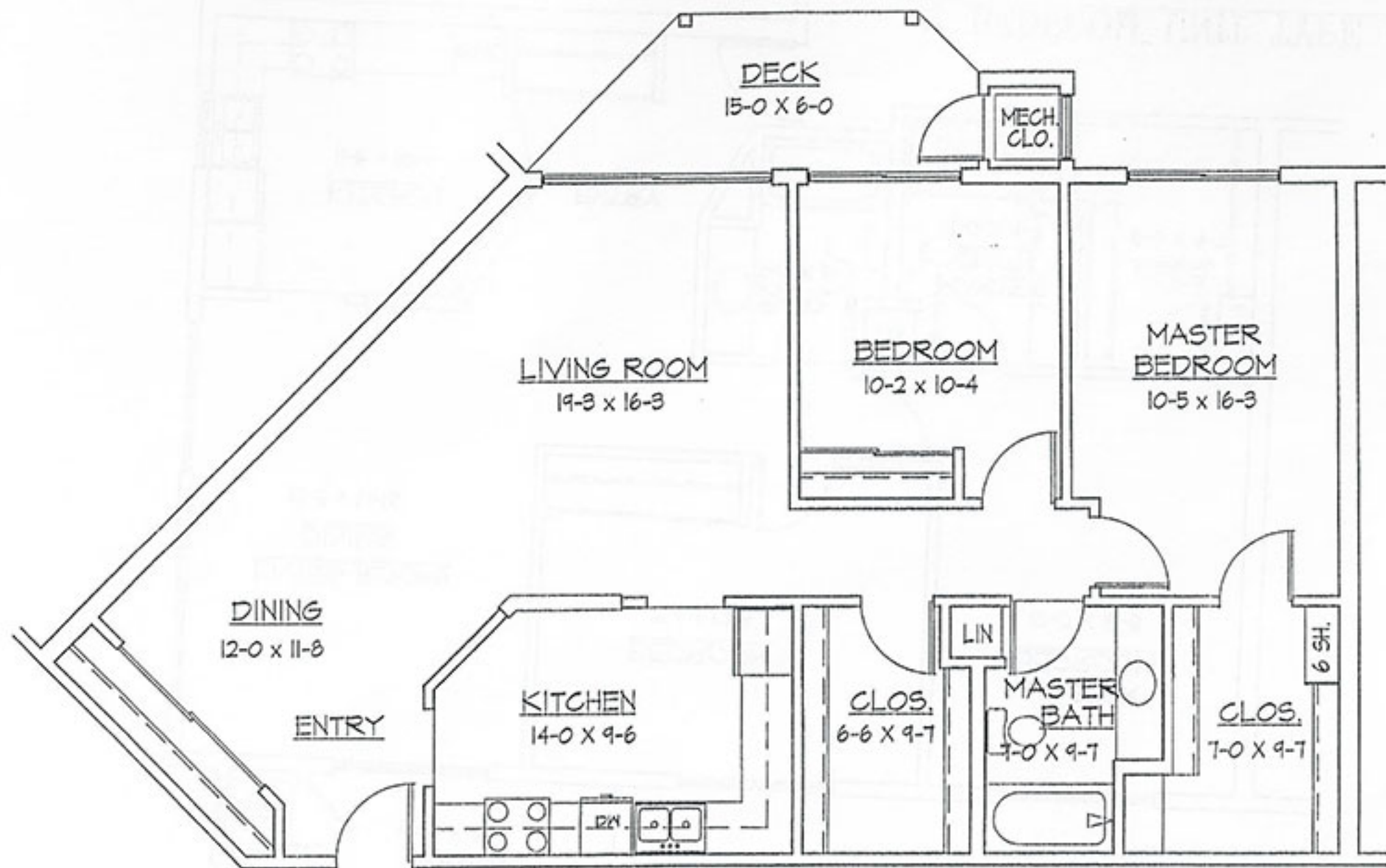
1/4" = 1'-0"

10-21-96

ACTUAL DIMENSIONS MAY VARY

Realife Cooperative of Bloomington





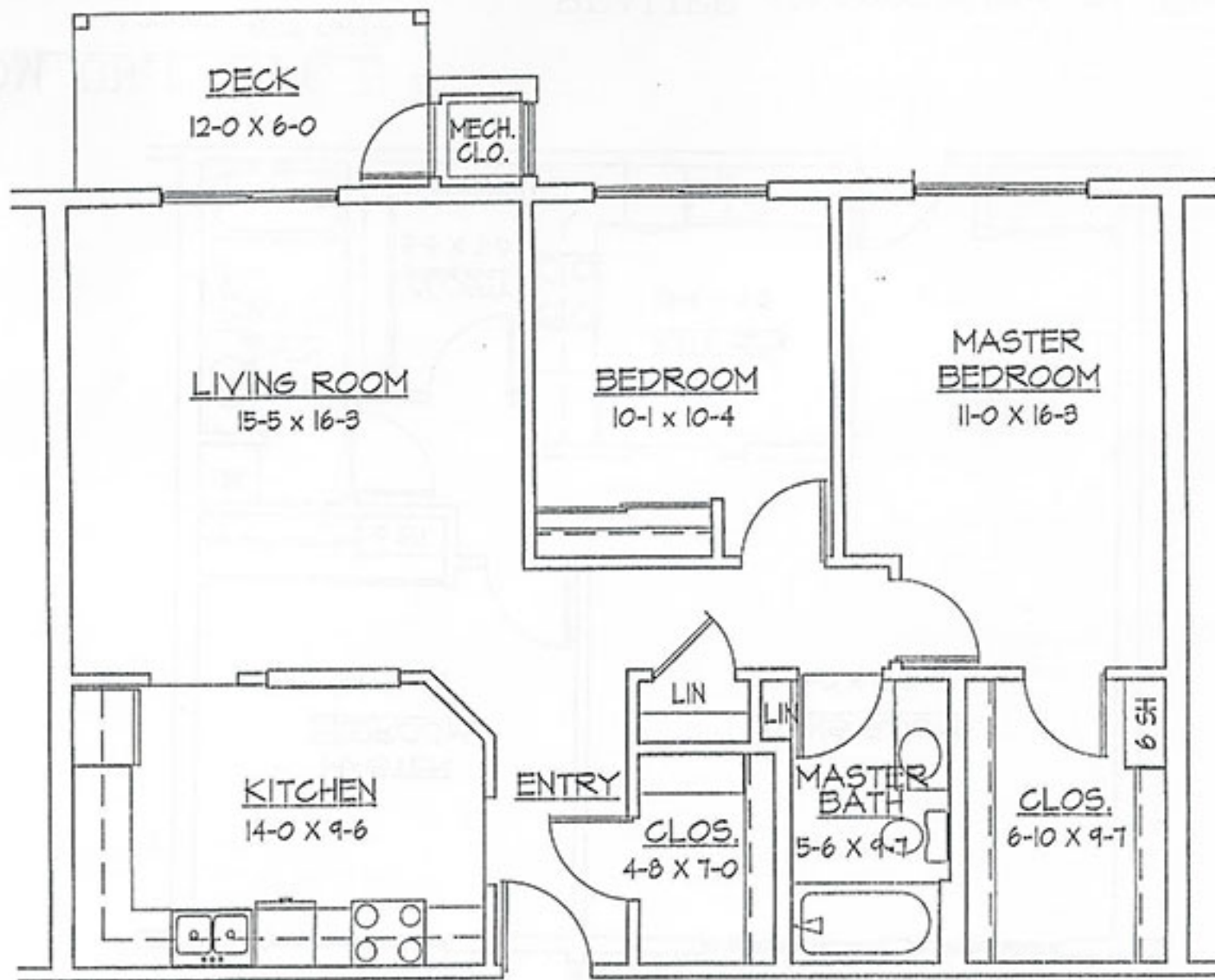
2 BEDROOM UNIT TYPE E ©

1/4" = 1'-0"      Approx 1124 Sq.Ft.  
ACTUAL DIMENSIONS MAY VARY      10-20-97

REALIFE Cooperative of Bloomington

Johnson, Dutton & Associates  
Architects, Inc.  
1210 Yellow Birch Drive      Suite 220  
Bloomington, IN 47403  
Ph: 812-835-0377      Fax: 812-835-0378





2 BEDROOM UNIT TYPE EE ©

1/4" = 1'-0"

Approx 984 Sq.Ft.

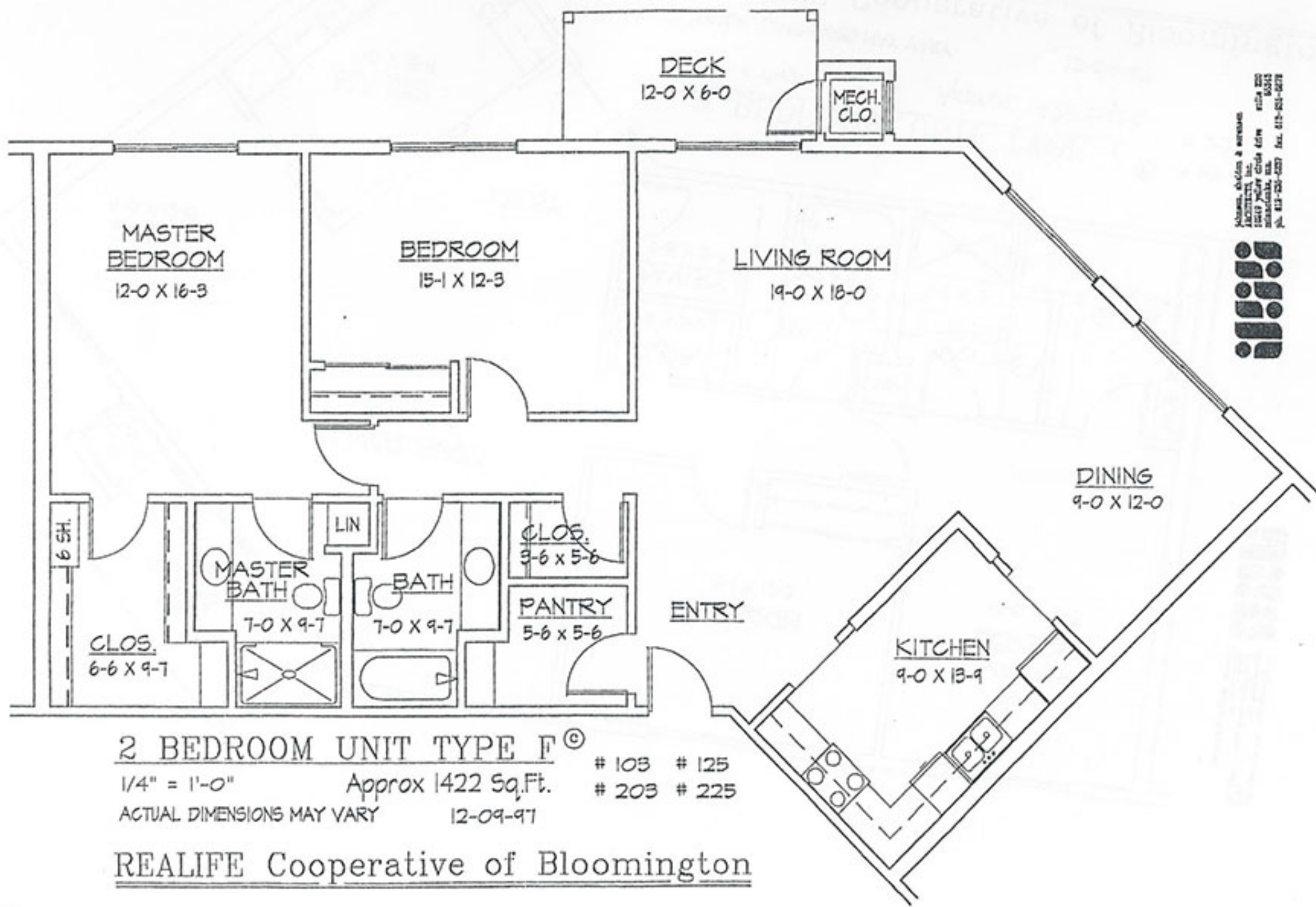
ACTUAL DIMENSIONS MAY VARY

10-20-97

REALIFE Cooperative of Bloomington

Johnson, Gordin & Sorrento  
 ARCHITECTS, INC.  
 1200 New Shore Drive  
 Bloomington, IL 61710  
 Tel. 618-880-6377 Fax. 618-880-0678





Adams, Skidmore & Associates  
 ARCHITECTS, INC.  
 10017 Yarmouth Circle, Suite 200  
 Boston, MA 02130  
 Ph: 617-251-4227 Fax: 617-251-6278



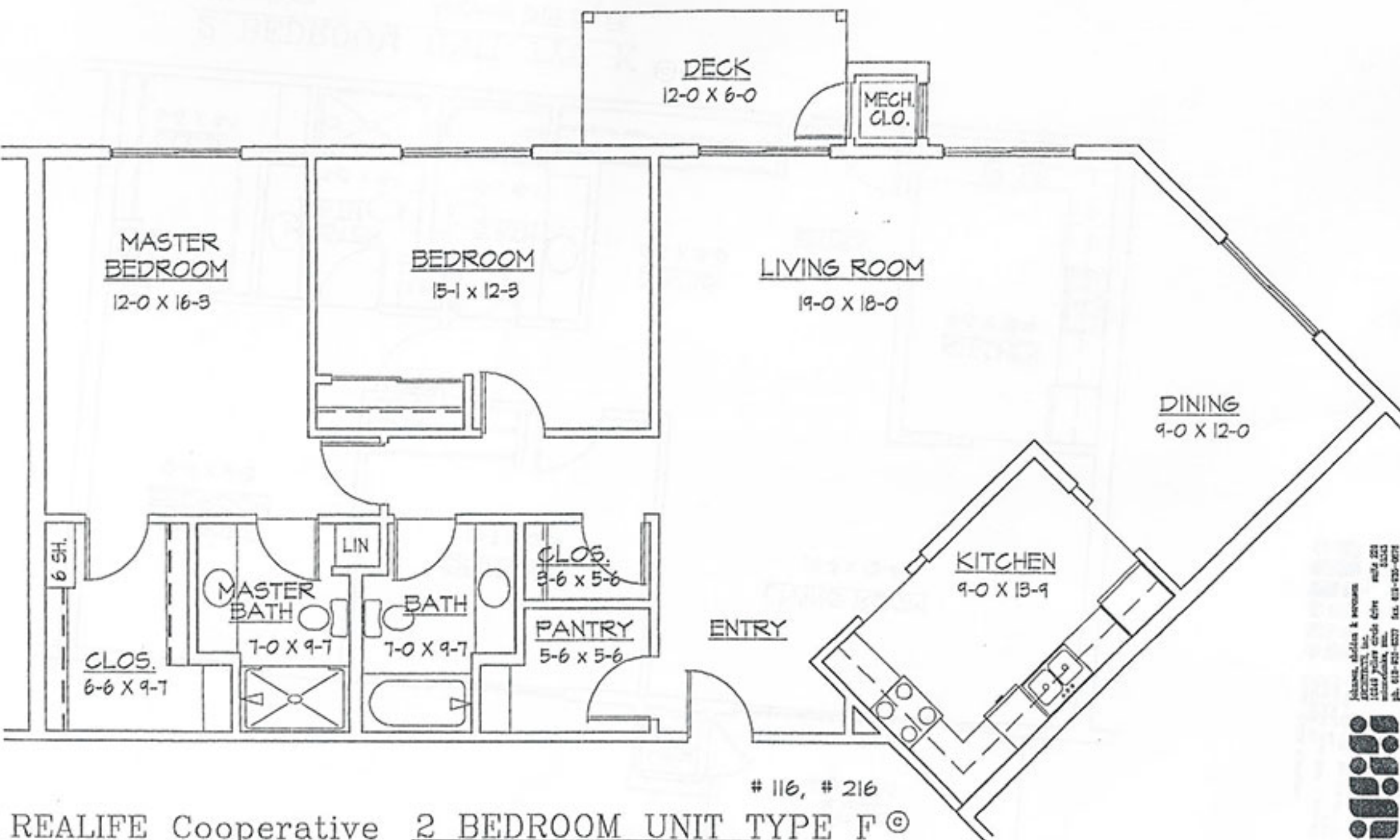
**2 BEDROOM UNIT TYPE F<sup>©</sup>**

1/4" = 1'-0"      Approx 1422 Sq.Ft.      # 103    # 125  
 # 203    # 225  
 ACTUAL DIMENSIONS MAY VARY      12-09-97

**REALIFE Cooperative of Bloomington**



2 BEDROOM



# 116, # 216

REALIFE Cooperative  
of Bloomington

2 BEDROOM UNIT TYPE F ©

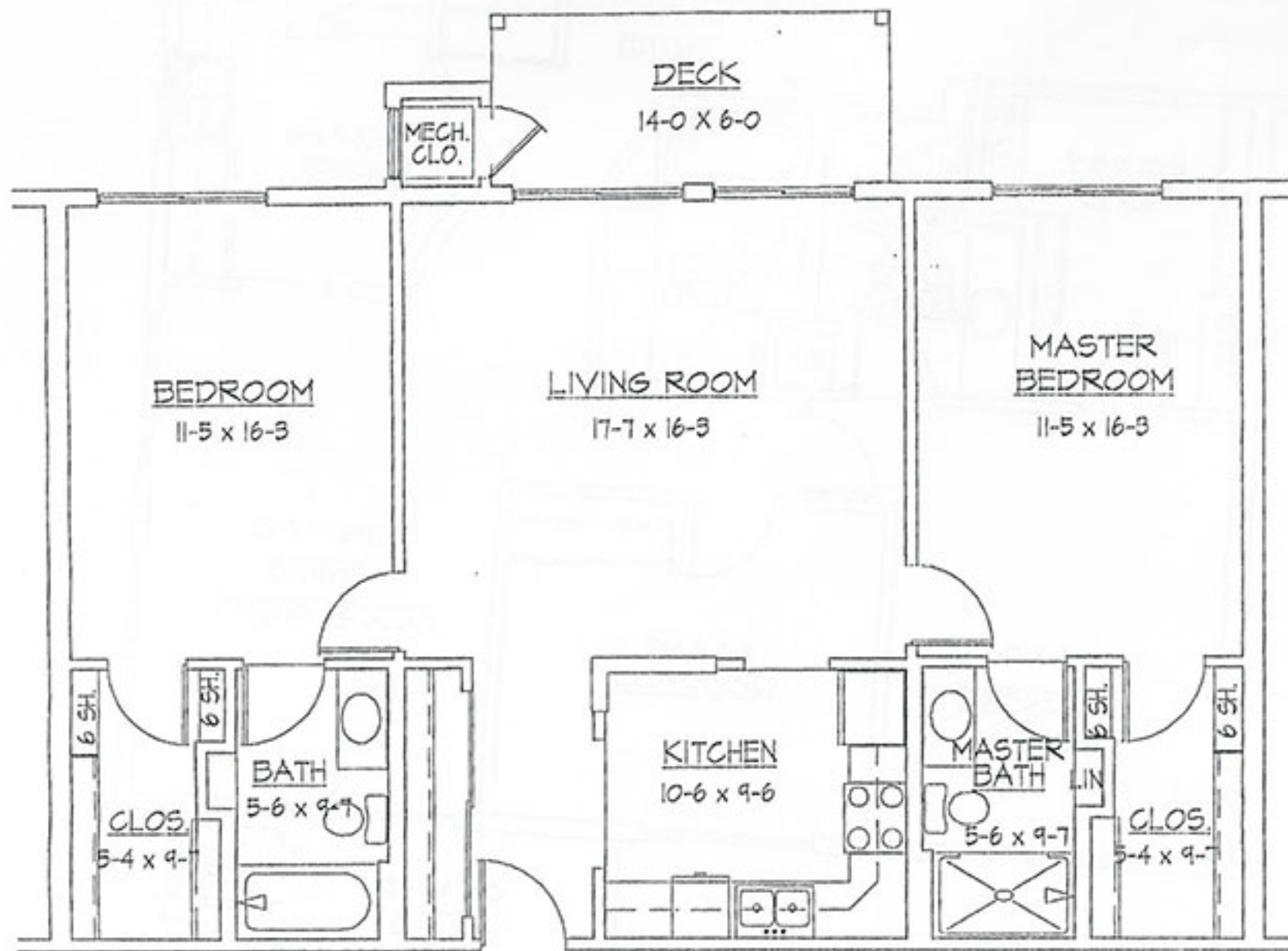
1/4" = 1'-0"      Approx 1422 Sq.Ft.

ACTUAL DIMENSIONS MAY VARY      12-09--97

Johannes, Shellen & Associates  
Architects, Inc.  
11111 Polaris Circle Drive    Suite 201  
Bloomington, MN    55425  
Ph. 612-821-8227    Fax. 612-821-0072







2 BEDROOM UNIT TYPE G ©

1/4" = 1'-0"

Approx 1090 Sq.Ft.

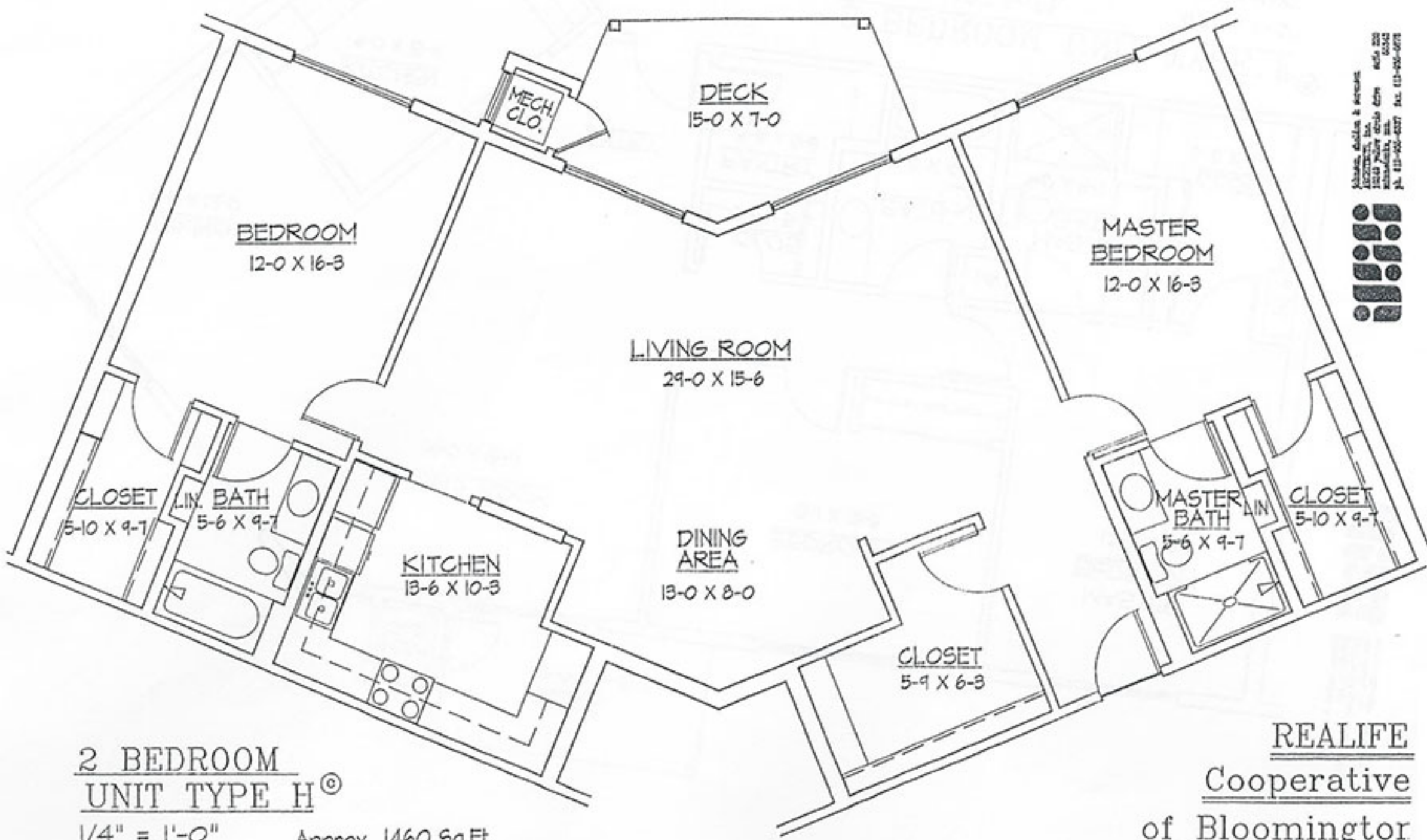
ACTUAL DIMENSIONS MAY VARY

12-09-97

REALIFE Cooperative of Bloomington

HOUSE, DESIGN & CONSTRUCTION, INC.  
1210 PINE CIRCLE 4TH FLOOR  
BLOOMINGTON, IN 47403  
PH. 812-255-1337 FAX. 812-255-0778





Johnson, Sullivan & Associates  
 ARCHITECTS, INC.  
 12210 Wilshire Blvd. Suite 202  
 Culver City, CA 90230  
 Tel. 310-400-6077 Fax. 310-400-6078

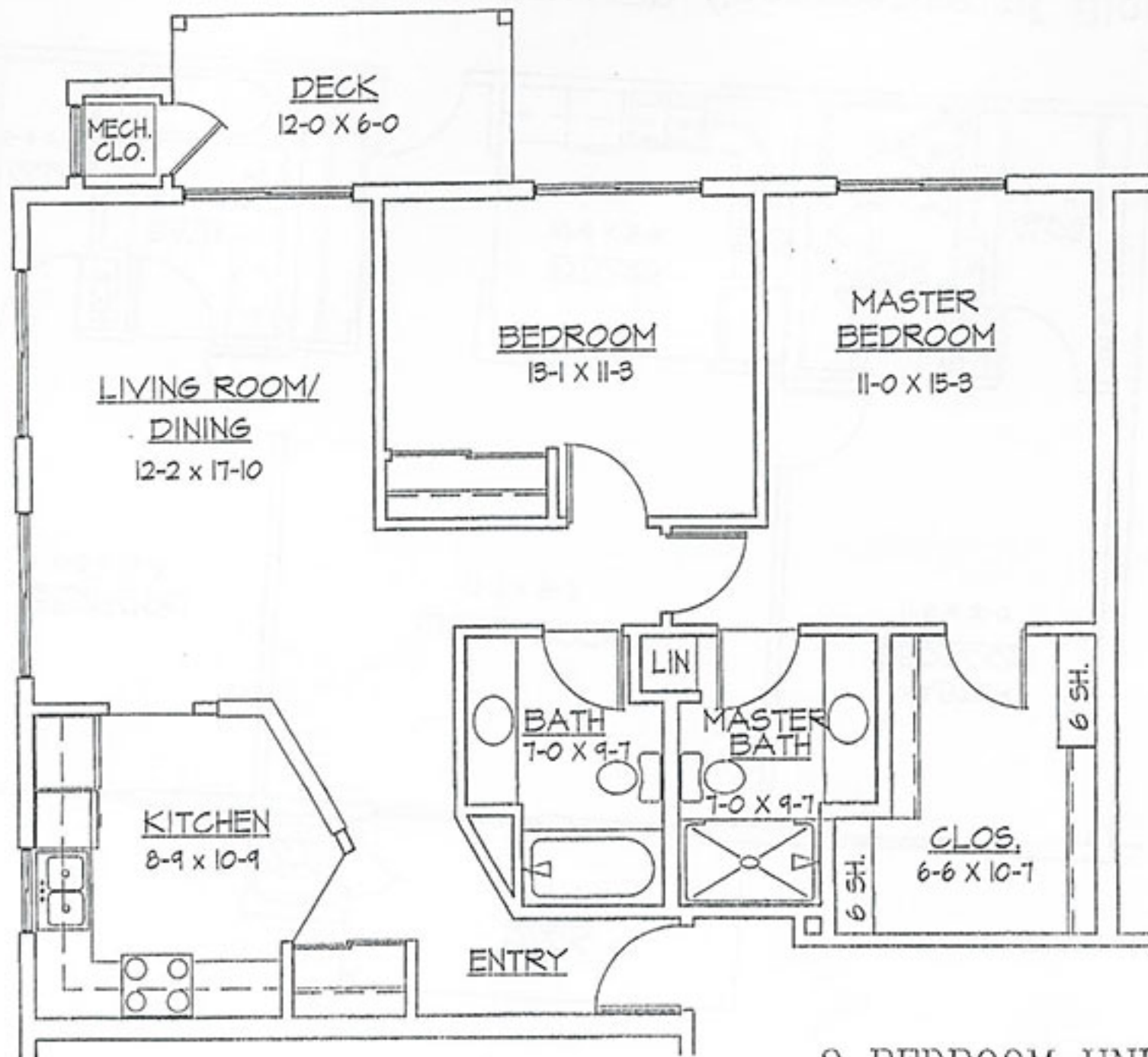


2 BEDROOM  
UNIT TYPE H ©

1/4" = 1'-0"      Approx 1460 Sq.Ft.

ACTUAL DIMENSIONS MAY VARY      10-17-97

REALIFE  
Cooperative  
of Bloomington



Planning, Design & Services  
 ARCHITECT, INC.  
 1000 Valley Circle Drive Suite 200  
 Bloomington, IN 47403  
 Ph: 615-552-4327 Fax: 615-552-0778

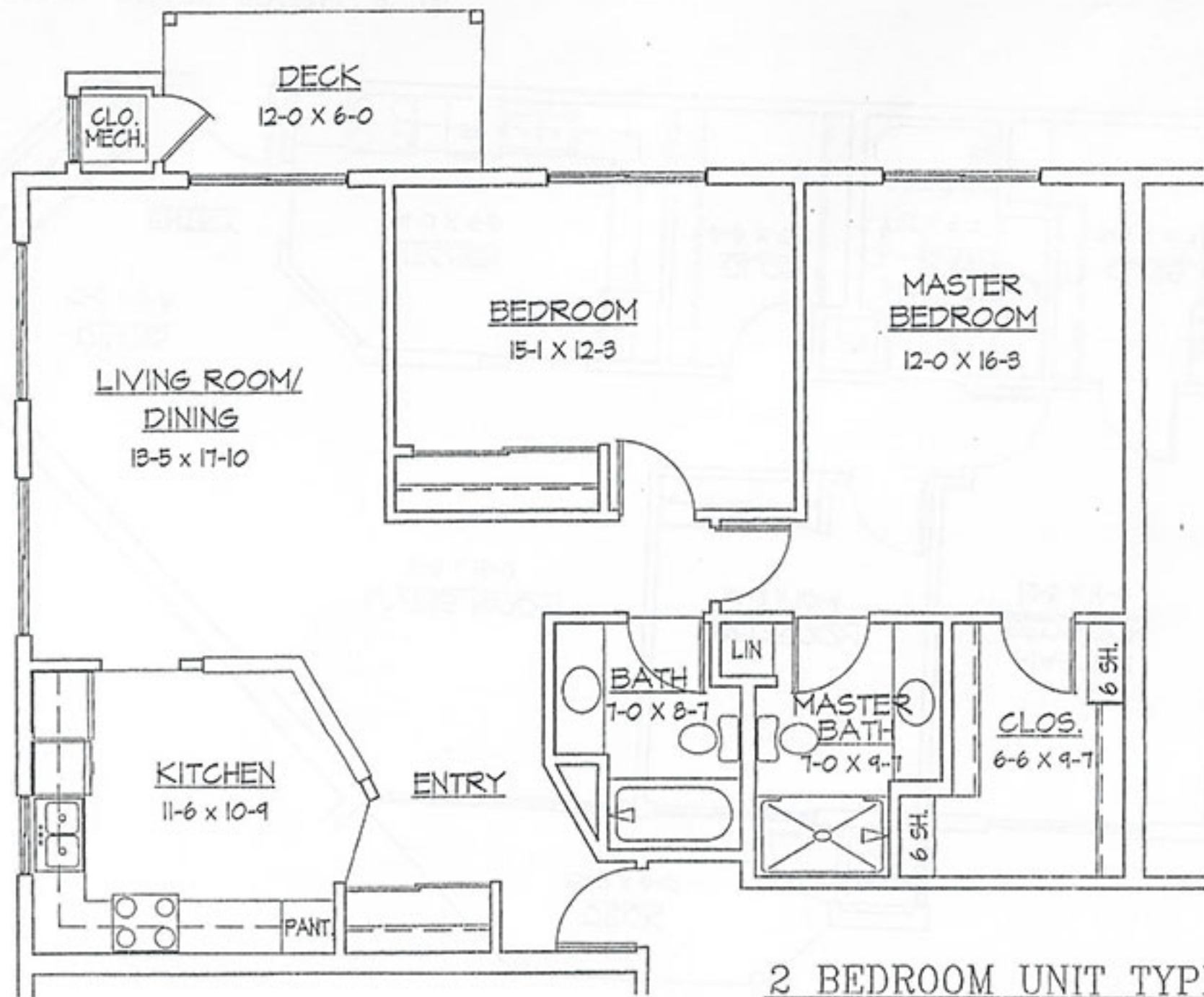
REALIFE Cooperative of Bloomington

2 BEDROOM UNIT TYPE I ©

1/4" = 1'-0"      Approx 1057 Sq.Ft.

ACTUAL DIMENSIONS MAY VARY      12-16-97



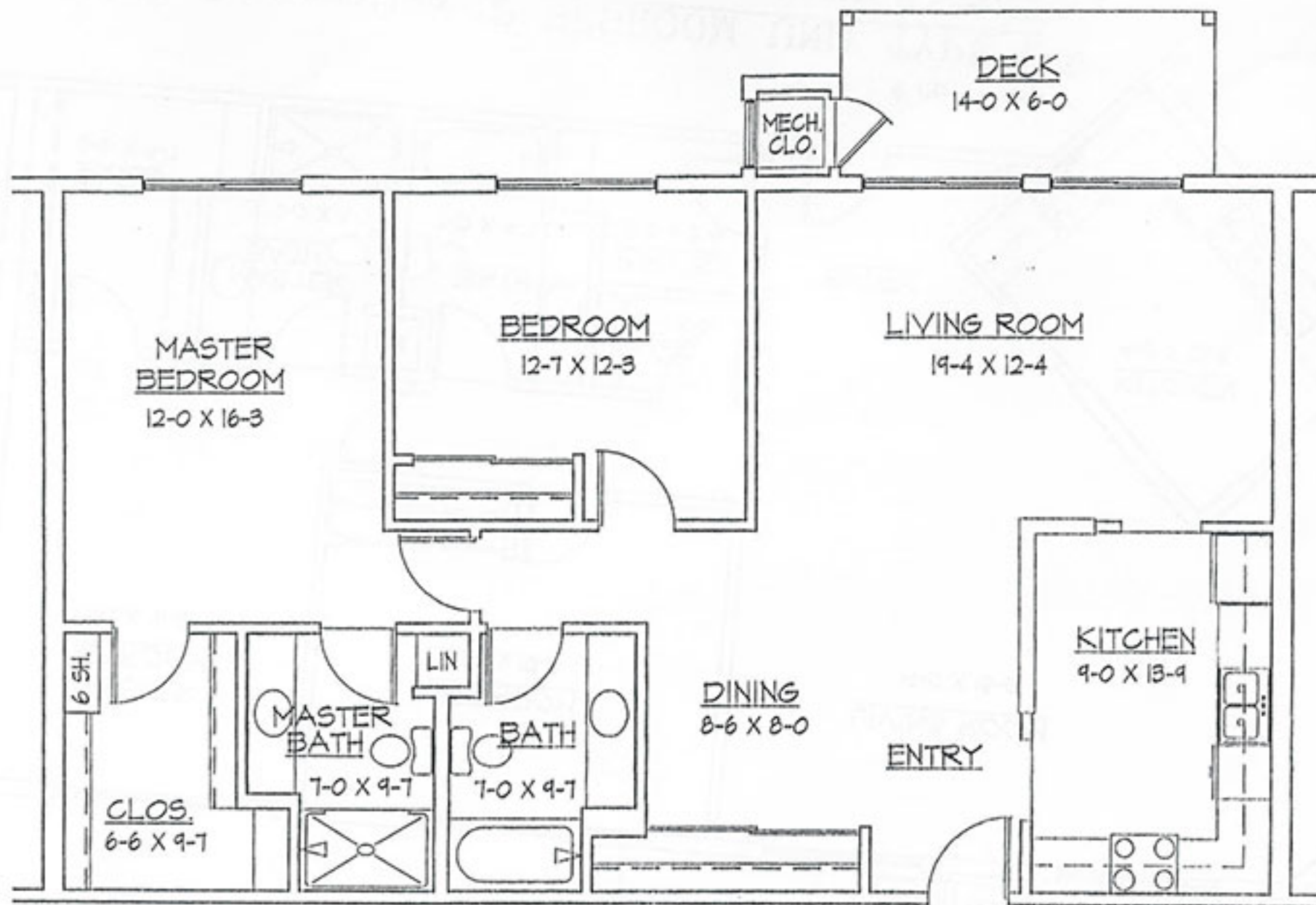


Johnson, Giddens & Partners  
 ARCHITECTS, INC.  
 1020 PINE DRIVE  
 BIRMINGHAM, AL 35243  
 P. 412-955-4227 FAX 412-955-4078



REALIFE Cooperative of Bloomington

2 BEDROOM UNIT TYPE J ©  
 1/4" = 1'-0" Approx 1152 Sq.Ft.  
 ACTUAL DIMENSIONS MAY VARY 12-16-97



2 BEDROOM UNIT TYP K ©

1/4" = 1'-0"

Approx 1195 Sq.Ft.

ACTUAL DIMENSIONS MAY VARY

10-17-97

REALIFE Cooperative of Bloomington

Johnson, Skolnik & Associates  
Architects, Inc.  
12119 Jolly Road  
Bloomington, IL 61704  
PH: 815-225-0327 FAX: 815-225-0278

